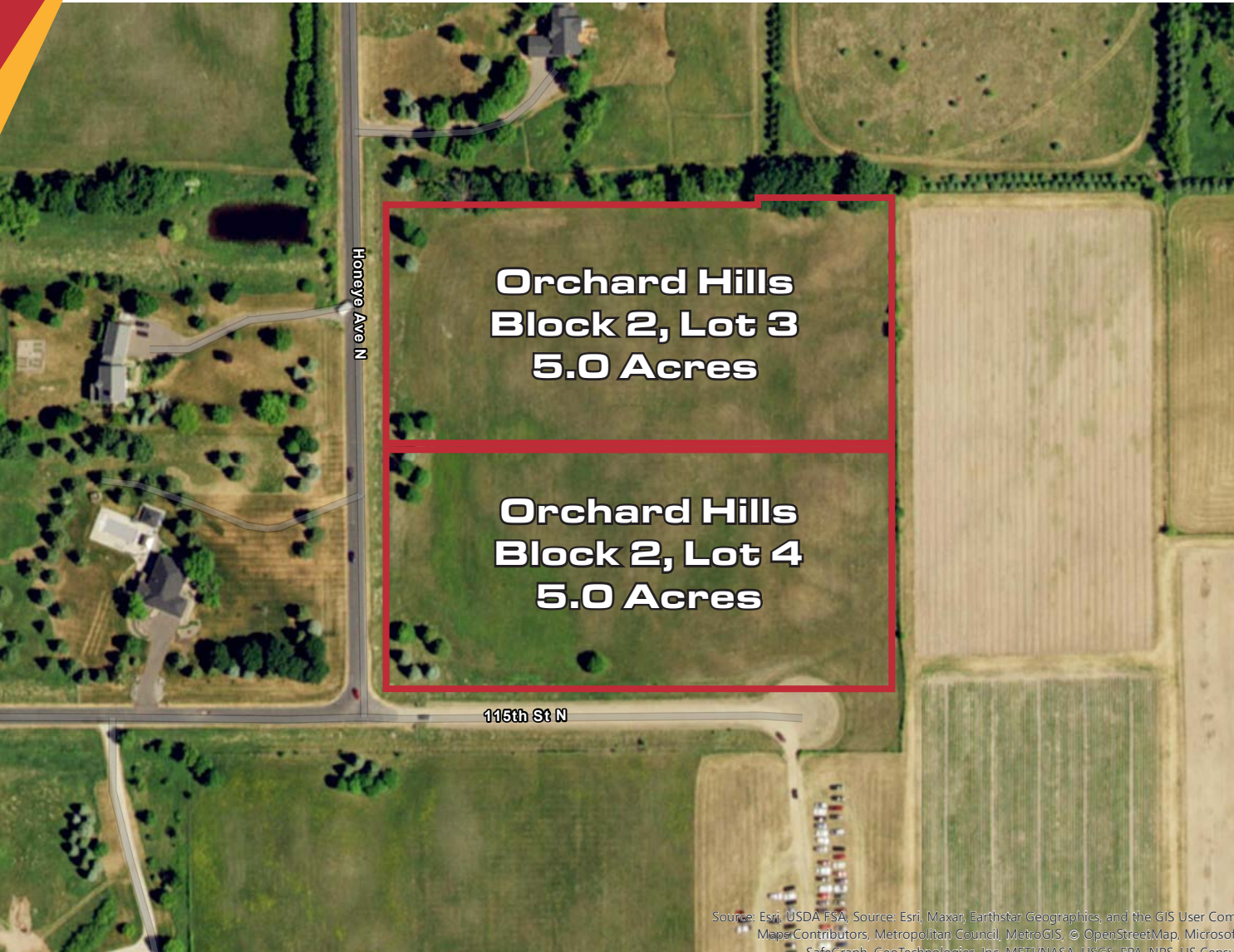


FOR SALE: Residential Lots For Sale

XXX Honeye Ave N | Grant, MN



**Orchard Hills
Block 2, Lot 3
5.0 Acres**

**Orchard Hills
Block 2, Lot 4
5.0 Acres**

115th St N

Source: Esri, USDA FSA, Source: Esri, Maxar, Earthstar Geographics, and the GIS User Community
Map Contributors, Metropolitan Council, MetroGIS, © OpenStreetMap, Microsoft, SafeGraph, GeoTechnologies, Inc, MET/NASA, USGS, EPA, NPS, US Census Bureau

Property Information

Exclusive Land parcels for sale adjacent to Pine Tree Apple Orchard.

Lot Size: Lot 3: 5.0 Acres
Lot 4: 5.0 Acres

Zoning: Agricultural / Residential

County: Washington

PIDs: Lot 3: 0503021140002
Lot 4: 0503021140003

Asking Price: Lot 3: \$525,000
Lot 4: \$525,000

Jon Whitcomb Broker / Owner

1950 Northwestern Ave N #101
Stillwater, MN 55082

Cell 651.283.4884
Office 651.351.5005

Email Jon@MetroEastCRE.com
Web www.MetroEastCRE.com

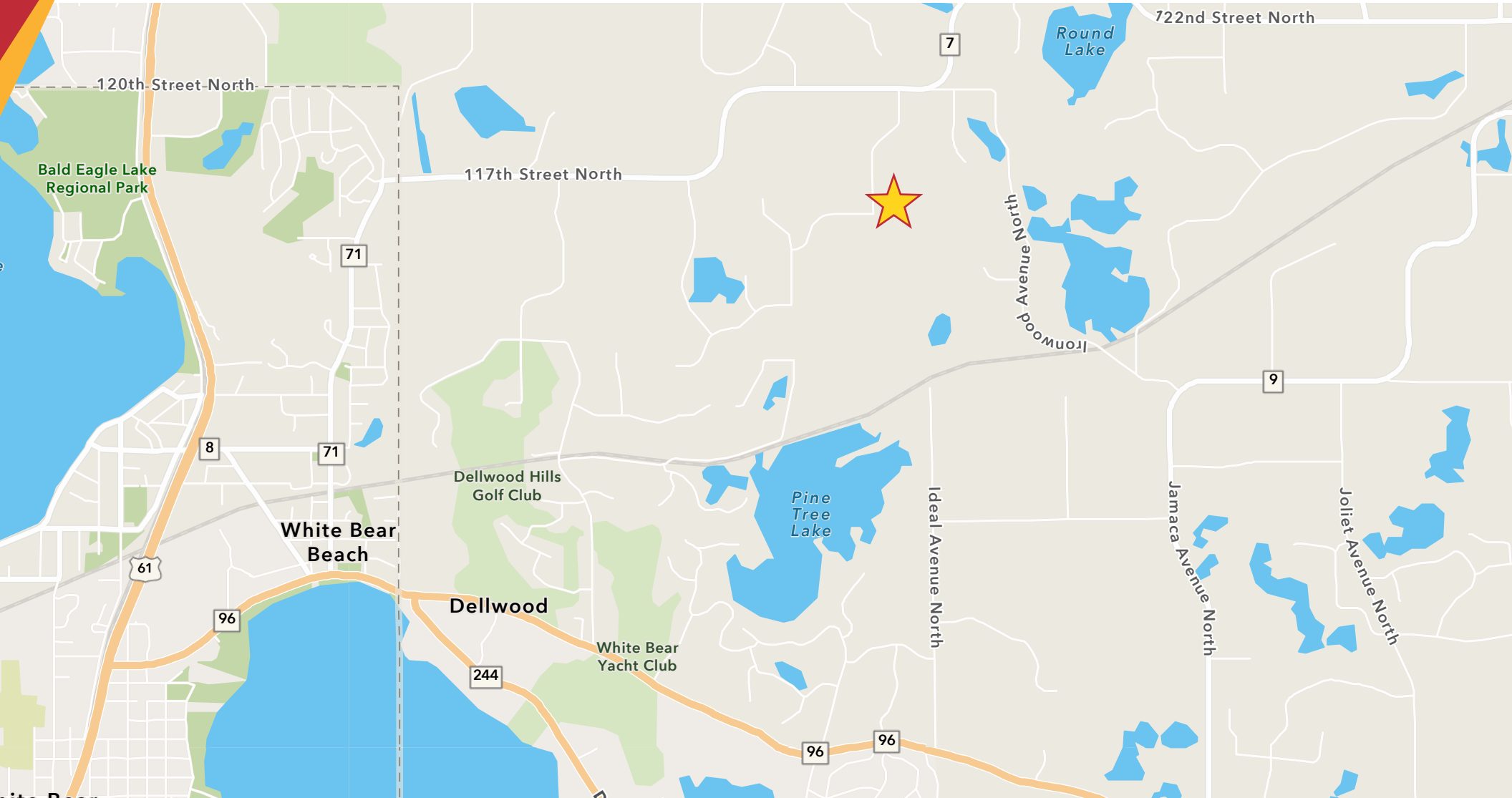
The information contained herein has been provided by the property owner or obtained from sources deemed reliable. Although the information is believed to be accurate, it is not guaranteed. The property is subject to price change, prior sale or lease and withdrawal from the market, without notice. Buyer is responsible to conduct its own due diligence, as this offering contains no representations or warranties.



COMMERCIAL REAL ESTATE SERVICES

FOR SALE: Residential Lots For Sale

XXX Honeye Ave N | Grant, MN



COMMERCIAL REAL ESTATE SERVICES

Jon Whitcomb Broker / Owner

1950 Northwestern Ave N #101
Stillwater, MN 55082

Cell 651.283.4884
Office 651.351.5005

Email Jon@MetroEastCRE.com
Web www.MetroEastCRE.com

The information contained herein has been provided by the property owner or obtained from sources deemed reliable. Although the information is believed to be accurate, it is not guaranteed. The property is subject to price change, prior sale or lease and withdrawal from the market, without notice. Buyer is responsible to conduct its own due diligence, as this offering contains no representations or warranties.

FOR SALE: Residential Lots For Sale

XXX Honeye Ave N | Grant, MN



Jon Whitcomb *Broker / Owner*

1950 Northwestern Ave N #101
Stillwater, MN 55082

Cell 651.283.4884
Office 651.351.5005

Email Jon@MetroEastCRE.com
Web www.MetroEastCRE.com

The information contained herein has been provided by the property owner or obtained from sources deemed reliable. Although the information is believed to be accurate, it is not guaranteed. The property is subject to price change, prior sale or lease and withdrawal from the market, without notice. Buyer is responsible to conduct its own due diligence, as this offering contains no representations or warranties.



COMMERCIAL REAL ESTATE SERVICES

FOR SALE: Residential Lots For Sale

XXX Honeye Ave N | Grant, MN



Jon Whitcomb *Broker / Owner*

1950 Northwestern Ave N #101
Stillwater, MN 55082

Cell 651.283.4884
Office 651.351.5005

Email Jon@MetroEastCRE.com
Web www.MetroEastCRE.com

The information contained herein has been provided by the property owner or obtained from sources deemed reliable. Although the information is believed to be accurate, it is not guaranteed. The property is subject to price change, prior sale or lease and withdrawal from the market, without notice. Buyer is responsible to conduct its own due diligence, as this offering contains no representations or warranties.



COMMERCIAL REAL ESTATE SERVICES

FOR SALE: Residential Lots For Sale

XXX Honeye Ave N | Grant, MN



Jon Whitcomb Broker / Owner

1950 Northwestern Ave N #101
Stillwater, MN 55082

Cell 651.283.4884
Office 651.351.5005

Email Jon@MetroEastCRE.com
Web www.MetroEastCRE.com

The information contained herein has been provided by the property owner or obtained from sources deemed reliable. Although the information is believed to be accurate, it is not guaranteed. The property is subject to price change, prior sale or lease and withdrawal from the market, without notice. Buyer is responsible to conduct its own due diligence, as this offering contains no representations or warranties.



COMMERCIAL REAL ESTATE SERVICES